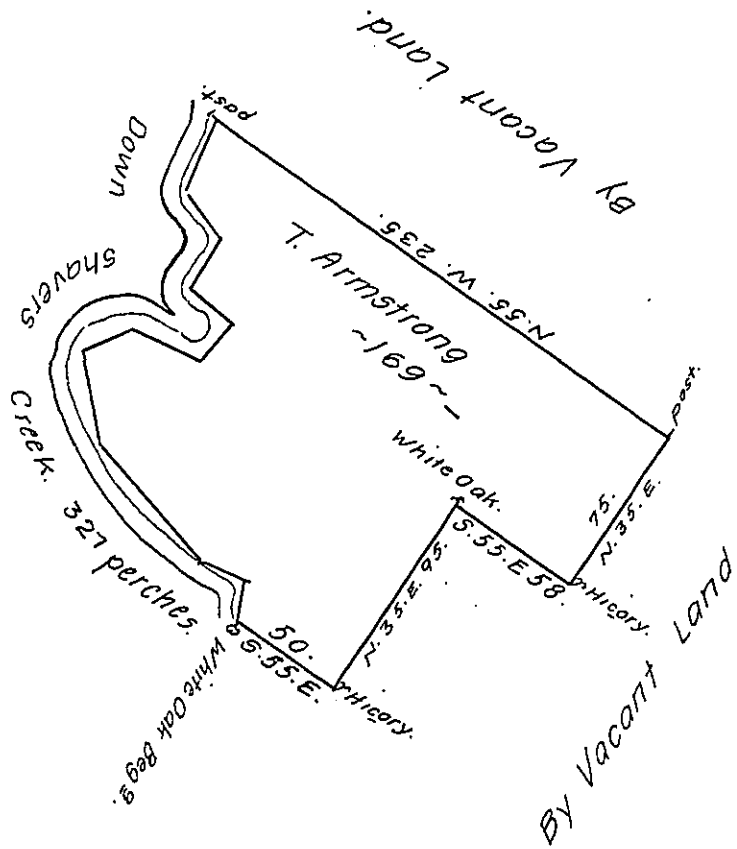


Courses and Distances }  
Down Shavers Creek. }

S.	26.	W.	33.
S.	35.	E.	20.
S.	33.	W.	26.
S.	55.	E.	22.
S.	38.	W.	20.
N.	65.	W.	32.
S.	69.	W.	23.
S.	10.	E.	43.
S.	41.	E.	65.
S.	67.	E.	20.
S.	11.	W.	17.
			327



The Draught of a tract of land called \_\_\_\_\_ situate on Shavers  
creek in the County of Cumberland, containing One Hundred Sixty nine  
acres with the usual allowance of six acres & Cent. for Roads. Survey'd  
the 12th. day of November, Anno Dom., 1766. For Thomas Armstrong.  
In Pursuance of a Warrant from the Hon<sup>ble</sup> Proprietaries Bearing  
Date at Philad<sup>a</sup>: the 25th. day of April, Anno Dom., 1763.

To John Lukens, Esq: S.G. } & Wm. Maclay, D.S.  
of Pennsylvania }

IN TESTIMONY that the above is a copy of the original remaining on file in  
the Department of Internal Affairs of Pennsylvania, made  
conformably to an Act of Assembly approved the 16th day of  
February, 1833, I have hereunto set my Hand and caused  
the Seal of said Department to be affixed at Harrisburg,  
this.....third.....day of.....May.....1911.

*Henry Honck*  
Secretary of Internal Affairs.